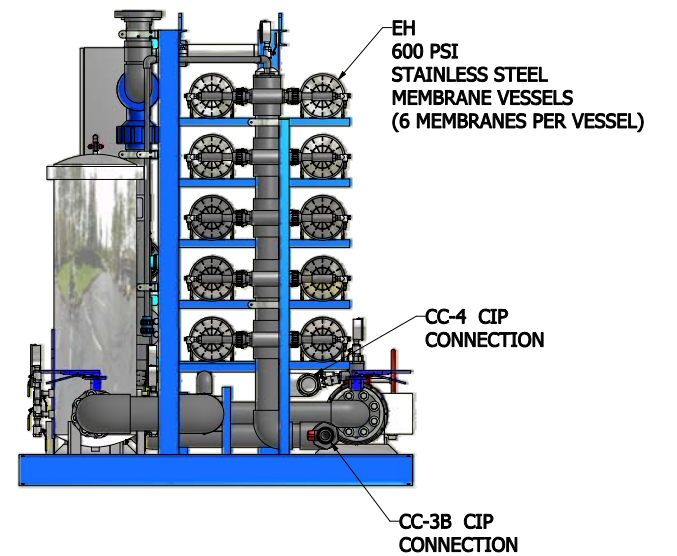
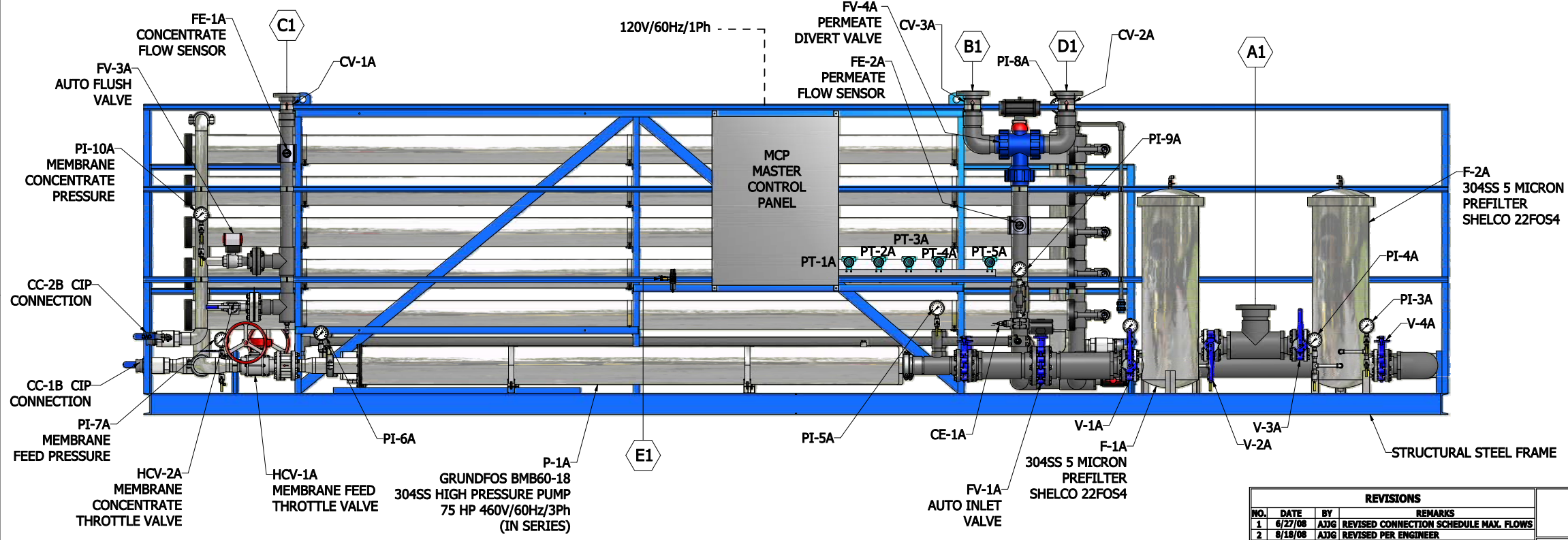
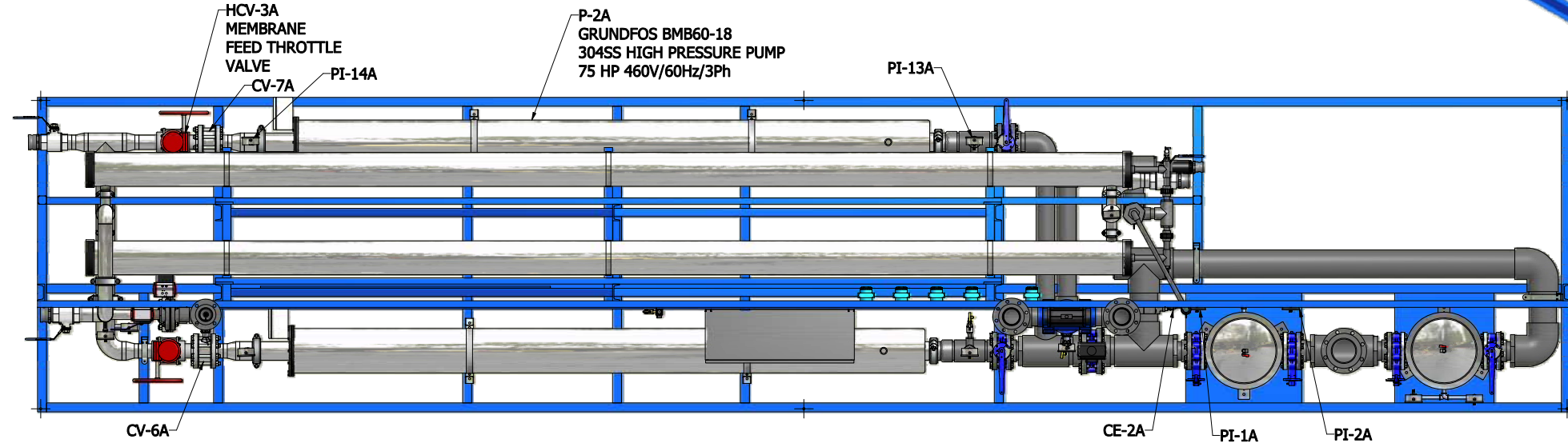
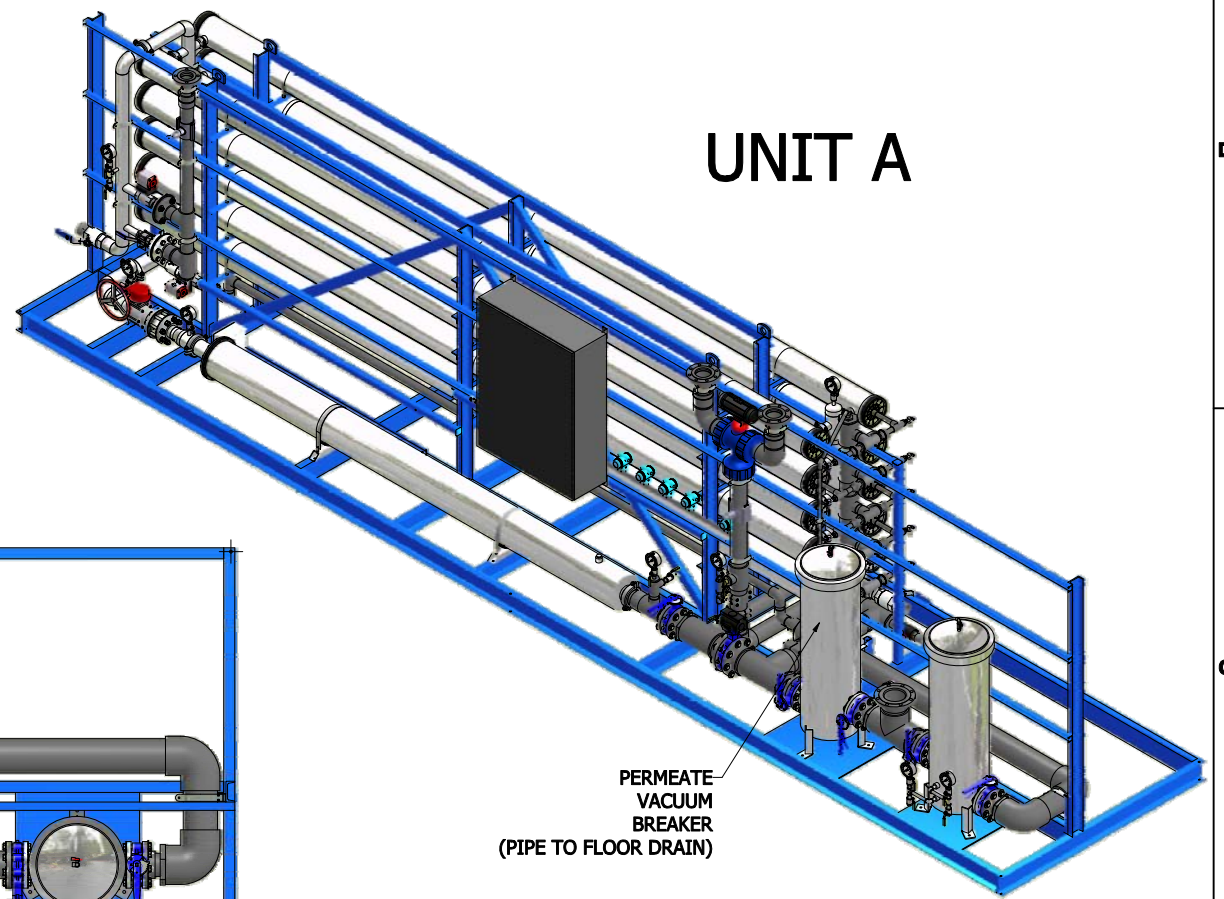


CONNECTION SCHEDULE						
ITEM	DESCRIPTION	LOCATION	MAX. FLOW	SIZE	CONNECTION	MATERIAL
A1	RAW WATER INLET	R.O. SKID	432 GPM	6"	150# FLANGE RF	PVC SCH 80
B1	PERMEATE OUTLET	R.O. SKID	250 GPM	4"	150# FLANGE RF	PVC SCH 80
C1	CONCENTRATE OUTLET	R.O. SKID	182 GPM	3"	150# FLANGE RF	PVC SCH 80
D1	LOW QUALITY PERMEATE OUTLET	R.O. SKID	250 GPM	4"	150# FLANGE RF	PVC SCH 80
E1	INSTRUMENT AIR 80 PSI	R.O. SKID	1 CFM	1/4"	FNPT	BRASS

SYSTEM OPERATING PARAMETERS

OPERATING PRESSURE: 40-450 PSIG
 MINIMUM INLET PRESSURE: 30 PSIG
 OPERATING TEMPERATURE RANGE: 33-85°F.
 MAXIMUM INLET FREE CHLORINE: <0.1 PPM
 MAXIMUM INLET SILT DENSITY INDEX (SDI): 3.0
 NOMINAL SYSTEM RECOVERY RATE: 58-60%
 NOMINAL SYSTEM TDS REJECTION: 95-99%
 RO PUMP ELECTRICAL REQUIREMENTS: 460 VAC, 3-PHASE, 60 Hz.
 CONTROL PANEL ELECTRICAL REQUIREMENTS: 120 VAC, 1-PHASE, 60 Hz.



REVISIONS				
NO.	DATE	BY	REVISIONS	REMARKS
1	6/27/08	AJG	REVISED CONNECTION SCHEDULE	MAX. FLOWS
2	8/18/08	AJG	REVISED PER ENGINEER	

MRO-360K-8H RO SYSTEM GENERAL ARRANGEMENT				
FRAC.	DEC.	FILE ID.		
DRN.	AGG	SCALE	SHEET 1 OF 1	
APPD.		DRAWING NO.		
DATE	4/11/2008			